

COMPASS

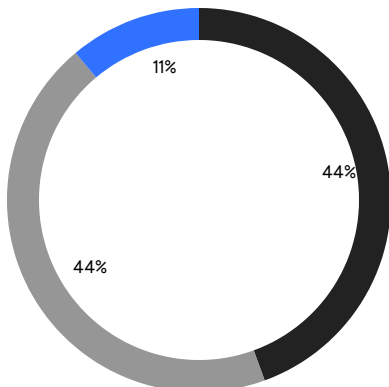
# QUEENS WEEKLY LUXURY REPORT



1818 CORNELIA STREET

RESIDENTIAL CONTRACTS  
\$1.25 MILLION AND UP

- NORTHEASTERN QUEENS
- NORTHWESTERN QUEENS
- CENTRAL QUEENS



9

CONTRACTS SIGNED  
THIS WEEK

\$15,008,000

TOTAL CONTRACT VOLUME

The Queens luxury real estate market, defined as all properties priced \$1.25M and above, saw 9 contracts signed this week, made up of 3 condos, and 6 houses. The previous week saw 12 deals. For more information or data, please reach out to a Compass agent.

**\$1,667,556**

AVERAGE ASKING PRICE

**\$1,435,000**

MEDIAN ASKING PRICE

**\$1,036**

AVERAGE PPSF

**1%**

AVERAGE DISCOUNT

**\$15,008,000**

TOTAL VOLUME

**84**

AVERAGE DAYS ON MARKET

149-37 9th Avenue in Whitestone entered contract this week, with a last asking price of \$2,480,000. Built in 2004, this house spans 5,150 square feet with 4 beds and 4 full baths. It features a 50-by-111-foot lot, a spacious living room, a family room with gas fireplace, a dining room with cooktop island, smart home and automation equipment, a custom spiral staircase, 20-foot ceilings, abundant storage space, a basement outfitted as an entertainment or gym area, a backyard with swimming pool, and much more.

Also signed this week was Unit 500 at 27-28 Thomson Avenue in Long Island City, with a last asking price of \$2,375,000. This completely renovated condo spans 1,894 square feet with 2 beds and 2 full baths. It features a kitchen with high-end appliances and custom cabinetry, an open layout with sliding partitions, high ceilings, oversized windows, abundant closet and storage space, a primary bedroom with an en-suite dual-sink bathroom, and much more. The building provides a full-time doorman, a fitness center and lap pool, a children's playroom, a roof deck, and many other amenities.

**3**

CONDO DEAL(S)

**0**

CO-OP DEAL(S)

**6**

TOWNHOUSE DEAL(S)

**\$1,745,000**

AVERAGE ASKING PRICE

**\$0**

AVERAGE ASKING PRICE

**\$1,628,834**

AVERAGE ASKING PRICE

**\$1,435,000**

MEDIAN ASKING PRICE

**\$0**

MEDIAN ASKING PRICE

**\$1,412,000**

MEDIAN ASKING PRICE

**\$1,423**

AVERAGE PPSF

**\$746**

AVERAGE PPSF

**1,272**

AVERAGE SQFT

**2,647**

AVERAGE SQFT



### 149-37 9TH AVE

Whitestone

TYPE	TOWNHOUSE	STATUS	CONTRACT	ASK	\$2,480,000	INITIAL	\$2,680,000
SQFT	5,200	PPSF	\$477	BEDS	4	BATHS	4.5
FEES	\$728	DOM	169				



### 27-28 THOMSON AVE #500

Long Island City

TYPE	CONDO	STATUS	CONTRACT	ASK	\$2,375,000	INITIAL	\$2,500,000
SQFT	1,894	PPSF	\$1,254	BEDS	2	BATHS	2.5
FEES	\$2,271	DOM	230				



### 53-20 193RD ST

Auburndale

TYPE	TOWNHOUSE	STATUS	CONTRACT	ASK	\$1,969,000	INITIAL	\$1,969,000
SQFT	1,998	PPSF	\$985	BEDS	4	BATHS	4
FEES	\$960	DOM	19				



### 72-39 JUNO ST

Forest Hills

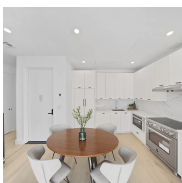
TYPE	TOWNHOUSE	STATUS	CONTRACT	ASK	\$1,499,000	INITIAL	\$1,499,000
SQFT	N/A	PPSF	N/A	BEDS	4	BATHS	2
FEES	\$950	DOM	28				



### 45-30 PEARSON ST #12F

Long Island City

TYPE	CONDO	STATUS	CONTRACT	ASK	\$1,435,000	INITIAL	\$1,435,000
SQFT	860	PPSF	\$1,669	BEDS	2	BATHS	2
FEES	\$1,422	DOM	43				



### 5-12 47TH AVE #3A

Long Island City

TYPE	CONDO	STATUS	CONTRACT	ASK	\$1,425,000	INITIAL	\$1,425,000
SQFT	1,060	PPSF	\$1,345	BEDS	2	BATHS	2
FEES	\$1,509	DOM	142				

Compass is a licensed real estate broker and abides by Equal Housing Opportunity laws. All material presented herein is intended for informational purposes only. Information is compiled from sources deemed reliable but is subject to errors, omissions, changes in price, condition, sale, or withdrawal without notice. No statement is made as to the accuracy of any description. All measurements and square footages are approximate. This is not intended to solicit property already listed. Nothing herein shall be construed as legal, accounting or other professional advice outside the realm of real estate brokerage.



### 20-23 29TH ST

Astoria

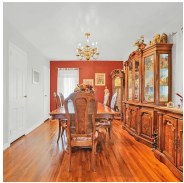
TYPE	TOWNHOUSE	STATUS	CONTRACT	ASK	\$1,325,000	INITIAL	\$1,325,000
SQFT	1,640	PPSF	\$808	BEDS	5	BATHS	2.5
FEES	\$846	DOM	11				



### 32-15 168TH ST

Murray Hill

TYPE	TOWNHOUSE	STATUS	CONTRACT	ASK	\$1,250,000	INITIAL	\$1,250,000
SQFT	N/A	PPSF	N/A	BEDS	4	BATHS	3
FEES	\$728	DOM	26				



### 173-22 EFFINGTON AVE

Flushing

TYPE	TOWNHOUSE	STATUS	CONTRACT	ASK	\$1,250,000	INITIAL	N/A
SQFT	1,750	PPSF	\$714	BEDS	5	BATHS	3
FEES	\$851	DOM	N/A				

Compass is a licensed real estate broker and abides by Equal Housing Opportunity laws. All material presented herein is intended for informational purposes only. Information is compiled from sources deemed reliable but is subject to errors, omissions, changes in price, condition, sale, or withdrawal without notice. No statement is made as to the accuracy of any description. All measurements and square footages are approximate. This is not intended to solicit property already listed. Nothing herein shall be construed as legal, accounting or other professional advice outside the realm of real estate brokerage.